



WALTON
NEIGHBOURHOOD PLAN

2014-26



Our Neighbourhood Plan Vision

www.waltonplan.co.uk

Contents

1.0 Introduction and Background

- 1.1 About Walton
- 1.2 How the Walton Neighbourhood Plan fits into the Planning System
- 1.3 How the Walton Neighbourhood Plan was prepared
- 1.4 How the Walton Neighbourhood plan is organised

2.0 Walton Neighbourhood Plan Vision and Objectives

- 2.1 Walton Today
- 2.2 The Vision
- 2.3 Composite Vision statement

3.0 Walton Neighbourhood Plan Policies

- 3.1 Strategy
- 3.2 Environment
 - Policy 1 - Extension to Wildlife Network*
 - Policy 2 - Local Green Space*
 - Policy 3 - Improving Local Green Space*
- 3.3 Heritage
 - Policy 4 - Historic Core*
 - Policy 5 - Waterton Historic Park*
 - Policy 6 - Walton Colliery Heritage Trail*
 - Policy 7 - Walton Heritage Trail*
- 3.4 Accessibility and linkages
 - Policy 8 - Improvements to existing footpaths, cycle ways and bridle paths*
 - Policy 9 - Provision of new footpaths, cycle ways and bridle paths*
 - Policy 10 - Public transport*
- 3.5 Housing
 - Policy 11 - The Grove Protected Area of Search Site*
 - Policy 12 - Waterways Land (PAS 13) site*
 - Policy 13 - New windfall housing sites*
- 3.6 Village Services and Facilities
 - Policy 14 - Safeguarding existing services*
 - Policy 15 - Providing new services*
 - Policy 16 - Provision of new allotments and community gardens*

4.0 Delivery Plan

- 4.1 Funding and Implementation
 - Policy 17 - Community Infrastructure Levy*
 - Policy 18 - Section 106 Agreements and Planning Conditions*
- 4.2 Summary Table of Projects

5.0 Plans

- WNP Policies Map

Introduction and Background

The Walton Neighbourhood Plan (WNP) is a new community led type of planning document which is part of the Government's approach to enable communities to better shape their places, and to help influence the type, quality and location of development.

The WNP provides a Vision for the future of the Parish of Walton, Wakefield and sets out clear planning policies to realise the Vision. Section 3 and the Policies Map of the WNP comprise the "Neighbourhood Development Plan" elements for decision making under the Town and Country Planning Acts. These policies accord with the requirements of the Localism Act (April 2012), the National Planning Policy Framework (March 2012), the National Planning Policy Guidance (March 2014), the Wakefield Core Strategy (April 2009), the Wakefield Development Policies (April 2009) and the Wakefield Site Specific Policies Local Plan (September 2012). The WNP seeks to ensure that change brings with it local benefit. To facilitate this, the WNP also sets out a Delivery Strategy with specific Projects to deliver the Vision (in accordance with the planning policies).

The WNP aims to make Walton an even better place to live, now and for future generations.

The WNP will cover a 12 year period from 2014 – 2026 to accord with the Wakefield Core Strategy.

1.1 ABOUT WALTON



Walton Parish covers an area of approximately 738 hectares and comprises the village of Walton, part of Walton Colliery Nature Park, Haw Park Woods, Waterton Park and surrounding agricultural land. The Parish of Walton sits between Crofton, Ryhill, Notton and Sandal. Crofton is the nearest key service centre (2 miles) which provides secondary (and sixth form) education, two 'top-up' supermarkets (with ATMs), a medical centre and chemist. The Sandal/Kettlethorpe District Centre lies some 2 miles from the centre of Walton and provides a large format supermarket (ASDA), a smaller supermarket (ALDI), two GP practices, three chemists, a dentist, restaurants, and Kettlethorpe High School is close by. Wakefield city centre is some 3 miles from the centre of Walton and provides a full range of employment, retail and cultural facilities. Walton is highly accessible by car due to the motorway network and the regional employment centres.

The history of Walton is set out in the book published in 1985 by Peter Wright 'A History of Walton'. Walton was first mentioned in the Domesday Book of 1086 and there is evidence of a manor house at Walton from early Norman times. Walton seems to have comprised three hamlets in the 14th century. The original Walton Hall was built

in the late 1400s and the ruined gateway still stands to this day. The Waterton family are synonymous with Walton but they had a chequered history. By the mid-17th century the village of Walton had grown further and coal mines were developed on the Walton Estate. Charles Waterton inherited the Estate in 1767 and set about rebuilding the Hall which is Waterton Park Hotel today.

Charles Waterton was a great explorer and was the inventor of taxidermy. He established Walton Hall as a nature reserve thought by many to be the first of its kind in the world. He is buried at the head of the lake, marked by a plain stone cross.

Walton housed a soap works from 1818 and some of the buildings (at Old Soaphouse Yard) are still in existence off Shay Lane in the centre of the village. Other notable properties include Walton Manor (now a Care Home); Walton Grange (now sub divided as houses); Bridge House (at the bend in School Lane); Elmwood House (the farm on Oakenshaw Lane); Walton Common Farm; Rose Farm; The Priory (off Shay Lane); and Grove House (off The Balk).

The Barnsley Canal was commenced in 1793 and 15 locks were built to reach the summit at Walton. It was completed by 1799. The Cold Hiendley and Winterset Reservoirs were created at the same time. The Canal was finally abandoned in 1952. Part of the Canal has been filled in and built upon, whilst other parts remain in varying states of repair.

Walton is bounded by railway lines, some of which are now abandoned. A railway station was built at Sandal and Walton in 1870 and renamed Walton Station in 1951. The station was subsequently closed and removed.

In 1890, Sharlston Colliery sank a new shaft at Walton, later to become known as Walton Colliery. It operated for many years but finally closed in 1979. Tip washing of the spoil heaps was undertaken to extract saleable coal and they were then landscaped subsequently to become the Walton Colliery Nature Park.

The village previously had its own health centre, doctor's surgery, maternity care, chiropody service, Post Office, local shops, several pubs, several schools, chapels, and churches. Whilst some of these facilities remain, many have been lost.

Introduction and Background

1.2 HOW THE WALTON NEIGHBOURHOOD PLAN FITS INTO THE PLANNING SYSTEM

The Localism Act came into force in November 2011. This confirmed the approach to Neighbourhood Plans and set out the requirement for Neighbourhood Plans to be in 'general conformity' with higher order planning policy. The WNP must therefore be in 'general conformity' with relevant national policy in the National Planning Policy Framework (March 2012) and local policy in particular the Wakefield Core Strategy and Development Policies (April 2009) and the Wakefield Site Specific Policies Local Plan (Sept 2012).

The Wakefield Core Strategy does not set out any specific housing or employment requirements for Walton. It sets out a spatial vision for Wakefield District which seeks to focus the majority of new development into Wakefield, Pontefract and Castleford along with urban renaissance initiatives in the 'Five Towns' area of Castleford, Pontefract, Normanton, Knottingley and Featherstone. It classifies settlements into 'Urban Areas', 'Local Service Centres', and 'Villages'. Walton is classified as a 'Village'. It notes (paragraph 5.32) that outside the 'urban areas' and 'local service centres', the scale of new development should be restricted. In settlements classified as 'villages', only small scale development should take place. Policy CS1 confirms;

'In settlements identified as villages only small scale development will take place where it helps to meet identified local needs within the existing boundaries of the settlement.'

Policy CS3 sets out the Scale and Distribution of Additional Housing. It notes that the Local Development Framework (LDF) will allocate land for housing for at least 10 years up to 2022. It identifies where housing should be met beyond that period;

'Beyond 2022 high priority will be given to bringing forward additional housing within or as an extension to Wakefield, Castleford, Pontefract and other parts of the Five Towns (Knottingley, Featherstone and Normanton) where there are specific and identified regeneration priorities.'

Walton does not therefore form part of the focus for housing growth within the initial 10 years or beyond 2022. Accordingly Walton is subject to Policy CS3 1d;

'In villages limited amounts of additional houses will be built to meet local needs up to a maximum scheme size of 10 dwellings, provided that development fills the whole land parcel or site and complies with density and design policies. To reflect the need to meet local housing requirements, these settlements are expected to accommodate up to 5% of the housing requirement.'

In accordance with the Core Strategy, the Wakefield Site Specific Policies Local Plan makes no housing or employment allocations within Walton or its Parish.

Surrounding Walton village is Green Belt. Policy CS3(f) states that in Green Belt, housing development will be of very limited scale and will only be permitted where it will conform to national Green Belt policy.

Although the Site Specific Policies Local Plan does not allocate any land for development within the WNP area, there are two areas designated as Protected Areas of Search for Long Term Development (PAS). PAS land is not required for development during the plan period because other more suitable development sites have been identified in accordance with Core Strategy policy CS1. PAS sites are protected for their future potential, but such land is not automatically regarded as long term development land.

The Site Specific Policies Local Plan also identifies a series of special habitats and landscape designations within Walton Parish. These include Local Nature Reserves, Local Wildlife Sites, Archaeological Sites, Ancient Woodland and the line of the Barnsley Canal.

The WNP needs to take account of and be in 'general conformity' with the above policy framework. Neighbourhood Plans must be in line with European Regulations on Strategic Environmental Assessment and Habitat Regulations. A screening assessment of WNP has been undertaken by Wakefield MDC on the need for an Appropriate Assessment and it has been concluded that such an Appropriate Assessment is not necessary. A Sustainability Appraisal Scoping Report, incorporating a Strategic Environmental Assessment has been undertaken by Wakefield MDC of the WNP.

Within the above context, the WNP has given local people the power to decide how Walton should change. Without the WNP, Wakefield Council would make these decisions on behalf of the people of Walton.

Introduction and Background

1.3 HOW THE WALTON NEIGHBOURHOOD PLAN WAS PREPARED

The WNP has been prepared by residents and members of Walton Parish Council working as part of the Walton Neighbourhood Plan Steering Group with support from Locality, Planning Aid England and Wakefield Council. The process has involved a number of key steps:-

Designation and Raising Awareness

In summer 2012 Walton Parish Council resolved to form a Neighbourhood Plan Steering Group to discuss the formation and scope of the neighbourhood planning process. The Walton Neighbourhood Plan Steering Group was formed and the Walton Neighbourhood Plan area was approved by Wakefield Council (after appropriate consultation) in Jan 2013. During spring and summer 2013, members of the Steering Group attended several village meetings informing residents of the neighbourhood planning process.

Consultation and Evidence Gathering

The Steering Group secured support from Locality and Planning Aid England to facilitate the WNP. The Steering Group began the process of gathering evidence to support the WNP in spring 2013. This included reviewing evidence that Wakefield Council used in the preparation of their Local Development Framework and Local Plan documents and the preparation of a neighbourhood profile using key national and local statistics. Wakefield Council produced a draft Appropriate Assessment Screening Report in July 2013. The Steering Group held regular monthly meetings to agree the approach and strategy. The Steering Group devised a WNP Questionnaire which asked a series of questions about what issues are important to the Community. The Steering Group delivered the Questionnaire in October 2013 to every household in the WNP area and also issued it to local businesses, landowners, community and faith groups, and sporting groups as well as to other interested parties. Members of the Steering Group attended local village events (such as Walton Gala), attended a School Visioning Day at Walton Primary School and also took the views of Walton Students at Crofton Academy. People were asked what they liked and disliked about the Parish and how they would want to see it evolve. The response rate to the Questionnaire was approximately 30% and all responses were analysed and reviewed. This information will be provided in the Consultation Statement.



Draft Plan, Submission and Examination

The responses to the community engagement events and questionnaires were used during winter 2013/14 to develop this Draft Walton Neighbourhood Plan (WNP). The Appropriate Assessment Screening Opinion has been the subject of a 3 week consultation in June 2014 and the Draft WNP and Sustainability Assessment Scoping Report was subject to a six week consultation in October/November 2014. The response rate to the questionnaire was approximately 20% and all responses were assessed. Minor changes were made to the WNP text and policies 3, 13, 15, 16, 17 and 18. The sustainability appraisal scoping report was also updated. The updated WNP was submitted to Wakefield Council for a six week publicity period and, following that, it underwent an independent examination. The Independent Examiner produced his report of examination on 13 August 2015 which recommended a minor addition to Policy 13 and subject to that being made that the Plan could proceed to a Local Referendum, where the community will be asked whether it wants Wakefield Council to use the WNP to help it to decide planning applications in the WNP area. If a favourable response is received, the WNP will become part of the statutory 'development plan' for the area and with the Wakefield Local Plan documents will become the starting point for deciding planning applications in Walton.

1.4 HOW THE WALTON NEIGHBOURHOOD PLAN IS ORGANISED

The WNP is divided into four sections:-

Section 1 – Introduction and Background

Section 2 – The WNP Vision and Objectives

Section 3 – WNP Policies

Section 4 – Delivery Plan

The whole of this document forms the Neighbourhood Plan for Walton Parish. Under the Localism Act, Sections 3 and 4 form the Plan's policies.

2.1 WALTON TODAY

Walton sits within a high quality landscape (protected by Green Belt) but as a village, it is reliant upon higher order settlements for many of its services and facilities. Walton's current services and facilities include: a Primary School, Fishing Lakes, a Community Library, a Post Office, two Hairdressers, two General Stores, a Hot Food Take Away, a Village Pub, a Golf Course with Restaurant and Golf Driving Range, a further Golf Driving Range, a Hotel with Restaurant and Leisure Spa, two Churches (with Meeting Rooms), a Village Hall, a Community Centre with sports pitches, Allotments, a Care Home, a Recreation Ground with play equipment, Country Parks, Tennis Courts, and Riding Stables. Sustaining and enhancing this service base of the village will be a key issue for the WNP.



Walton has a population of 3231 (2011 Census) of which 2426 are aged 16 to 74. There is a roughly equal gender split (1547 males/1684 females). Walton has 1387 households of which 1098 own their own property, 31 have shared ownership, 164 are in social rented, and 84 are in private rented accommodation. Walton has 1430 dwellings of which 483 are detached, 658 are semi-detached, 195 are terraced, 98 are flats and 2 are caravans or mobile homes. Walton sits within Wakefield Rural Ward which comprises Crofton, Ryhill and Walton. The level of owner occupation in Wakefield Rural is higher than any other Ward in the District. The population of Wakefield Rural has grown by 2.2% over the past 10 years, less than

the growth for Wakefield District (3.3%). In Wakefield Rural, over the past 10 years, the under 14 age group has shrunk in size by 10% and the 64+ age group has grown by 20%. This growth rate in the size of the older population is almost twice that seen across Wakefield District as a whole. Planning for and supporting the needs of an aging population will be a key issue for the WNP.

In terms of economic activity, Walton has 1635 economically active residents, 514 retired persons, 114 students and 52 long term sick or disabled. Residents of Wakefield Rural are more likely to work in senior management and professional occupations. Wakefield Rural has above average numbers of jobs in education, retail, accommodation and food services. Only 3.6% were unemployed in Wakefield Rural compared to 4.9% in Wakefield and 8% were self-employed in Wakefield Rural compared to 6.9% in Wakefield. In Feb 2012, in Wakefield Rural, 10.8% of working age people were claiming one or more out-of-work benefits compared to 15.4% in Wakefield and 3.1% were claiming Job Seekers Allowance; lower than the Wakefield Metropolitan District average rate. Around 25% of working age residents in Wakefield Rural have no qualifications (compared to 31% in the District) and 19% of working age residents in Wakefield Rural are qualified to degree level. Wakefield Rural has the lowest or second lowest levels of physical inactivity, smoking prevalence and excess weight in the District. Secondary schooling, sixth form education and degree level education is not available within Walton.

In the Crofton, Ryhill and Walton Ward, 19.9% of households have no car or van compared to 26.9% across the District as a whole. More people drive a car/van to work in Crofton, Ryhill and Walton (73%) compared to Wakefield District as a whole (66%). The ability to offer alternative means of transport (to the car) both to work and to services and facilities (including to schools) will be an important issue for the WNP as will opportunities to improve vehicular routes and potential pedestrian conflict.

Wakefield Rural has a distinct character and contains a high proportion of the District's biologically rich sites including woodland and nature reserves. Woodland cover at around 30% creates a very different landscape to the open areas lying to the east. Access to green spaces within Wakefield Rural is generally good and compares well to the District as a whole. Access to play areas is relatively poor within Wakefield Rural but is good within Walton. In close proximity to Walton, is Newmillerdam Country Park and Anglers Country Park. The WNP will need to consider the role, function and opportunity for enhancement of the variety of green spaces within Walton.

2.2 THE VISION

The WNP Questionnaire set out a Vision as follows:-

'The Walton Neighbourhood Plan area comprises both the village of Walton and its surrounding countryside. Walton is proud of its heritage which it cherishes and wishes to enhance but is also a forward-looking community seeking to become more self-sufficient and sustainable whilst recognising its key linkages and relationships with the adjacent communities of Crofton, Sandal and Ryhill; and also with the City of Wakefield.'

Approximately 92% of respondents agreed or strongly agreed with this Vision, though some minor alterations to the wording were suggested. This was therefore taken as the starting point for the WNP Vision which was refined and evolved as part of the Steering Group review in light of emerging evidence and other questionnaire responses. The Vision for the WNP comprises a series of key statements which are supported by objectives. Together these key statements comprise the WNP Vision Statement. This Vision Statement aims to ensure that Walton continues to thrive as a vibrant and distinctive village, respecting the views of its community, retaining its distinctive character and providing a high quality of life for existing and future residents.

'Walton must maintain its village character.'

Local people are proud of Walton being a true village, surrounded by open countryside and retaining its village 'feel'. A village is defined as 'a group of houses and associated buildings, larger than a hamlet and smaller than a town, situated in a rural area'. This captures the sentiment of Walton which sits within a rural area but which is influenced by and draws support from many other settlements. The village character of Walton therefore provides several objectives that are fundamental to the delivery of the Vision. The objectives are:-

Continue to have a close relationship with the open countryside around the village

- All residents live within a five minute walk of surrounding open farmland, woodland and green areas. This is a key relationship for residents and one that must be maintained and enhanced through:-
- Improvements to existing footpaths, cycle ways and bridle paths;
- Selective new footpaths, cycle ways and bridle paths to complete missing links;
- Respecting farmland and the Countryside Code.

Continue to protect and enhance village green spaces

Walton benefits from a wide range of green spaces within the village. Some have however suffered from under-investment and are in need of enhancement. Improvements and enhancements of the village green spaces should be delivered as part of the WNP.

Sustain existing services and facilities and support the delivery of new complementary services and facilities.

The village benefits from a range of services and facilities which add to the quality of life for residents. Local businesses are important to the sustainability of the village and proposals to enhance existing services and facilities should be supported. The provision of additional local facilities and services should be supported where they meet an existing need and can be accommodated without detriment to the existing community.

Improving the village environment for residents and visitors

The village has evolved organically and much of its character and environment has been respected. Several areas within the village do however need to be enhanced to combat the environmental impact of through traffic and the effect of leaving land/buildings under-utilised or derelict for a long period of time.

Support sensitive new development which protects and enriches the landscape and built setting of the village

The village needs to continue to evolve and grow but new development proposals should recognise the character of the village and should support local distinctiveness.

Focus future development to cater for local needs

The growth of the village should not be to a level that results in a change to its character as a 'village'. Opportunities for limited development within the village boundaries should be supported where they can be accommodated without detriment to the existing community. Such development should consider the needs of the older person profile of Walton. Larger scale housing developments would be out of kilter with the WNP. The Protected Area of Search (PAS) site (PAS 13 - Waterways Land) is identified within the Wakefield Local Plan and the WNP has to be in conformity with this policy, however the WNP will support a review of the suitability of that designation as part of a subsequent Wakefield Local Plan review.

Support local events

The village benefits from strong community cohesion. Local village initiatives and events such as Walton Gala and Walton Arts Festival should be supported to retain its local character.

Continue to act as a centre for its rural community

The WNP is not just about the village but is also about the whole community. The farming and rural community are vital to the sustainability of the whole WNP area. The WNP should provide support for rural development and diversification and respect for farming activities.

Walton Neighbourhood Plan - Vision and Objectives

‘Walton is proud of its heritage which it seeks to protect and cherish.’

Walton has a proud heritage relating to its origins of agriculture, the role of Walton Hall and the Waterton Estate, the Soap Works, Railways and Canal, and Walton Colliery. There is strong support to protect and cherish this history. Key objectives are:-

Preserve existing heritage buildings, features and assets

Walton is a hidden ‘gem’ in terms of its heritage and the WNP needs to provide support to retain and manage these heritage buildings, features and assets for the benefit of their owners, the community and visitors.

Widen knowledge of the heritage of Walton

By supporting community groups who seek to create opportunities for this to be facilitated and support for schools in this process.

Support local distinctiveness

When change within the built environment is proposed, any new or altered building or new/replaced street furniture should be of a design quality appropriate to the heritage of the village.

Protect Walton’s landscape and nature conservation, and support initiatives for restoration and sustainable management

The WNP area benefits from large areas of woodland and also from significant trees within the village itself. These special landscape features should be protected and appropriately maintained.

‘Walton recognises its key linkages with other settlements which it seeks to improve.’

Walton is not a self-contained settlement and instead relies upon other settlements especially Wakefield, Crofton and Sandal/Kettlethorpe for its higher order shopping, medical and education requirements. Walton is accessible to these centres both by car and by bus. Sandal/Agbrigg train station is some 1.5 miles from the centre of Walton. Walton already benefits from good broadband and digital connectivity which allows residents to work from home and to access services and facilities on line; however support will be given to improving this broadband and digital connectivity further. Key objectives are:-

Maintain and enhance the bus linkages to key settlements

Existing bus facilities and services to Crofton and Wakefield are good. Improvements to local bus shelters and information displays should be addressed.

Enhance pedestrian facilities within the village and to key settlements

Existing footpaths from Walton to Crofton and Sandal are of varying quality and width. Improvements to these key pedestrian linkages should be addressed.



2.3 COMPOSITE VISION STATEMENT

'Walton must maintain its village character. Walton is proud of its heritage which it seeks to protect and cherish. Walton recognises its key linkages with other settlements which it seeks to improve.'



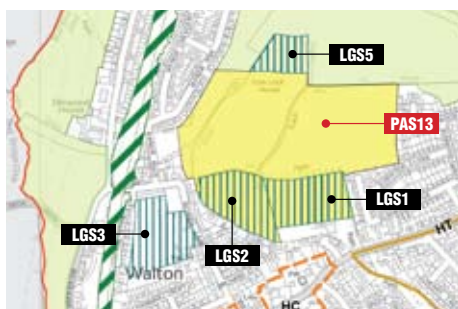
3.1 STRATEGY

Section 2 sets out the Vision for Walton, whilst Section 3 sets out the policies to support and deliver the Vision. The policies are grouped into the following topic areas:-

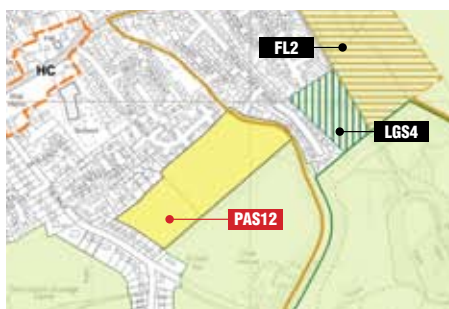
- **Environment**
- **Heritage**
- **Accessibility and linkages**
- **Housing**
- **Village services and facilities**

The overall strategy for the WNP area is to maintain the village character by protecting the existing Green Belt and rural countryside and thereby focusing new development into the village itself. Sustaining local businesses and improving local facilities are key priorities as is facilitating improvements to local services.

New housing development will be accommodated within the existing village confines and will be restricted to no more than 10 dwellings on any site (other than the implementation of the Continuing Care Retirement Community at The Grove). Any new housing scheme must reflect the character of the village and must be accommodated without detriment to the local community.



The Protected Area of Search (PAS) site (PAS 13 – Waterways Land) will be retained as PAS since it is a strategic policy of the Wakefield Local Plan which cannot be amended by a Neighbourhood Plan.



The WNP will also set out a policy for the PAS 12 site (off The Grove) to be retained as PAS but with recognition that it can be developed for the Continuing Care Retirement Community proposal.

No new employment development is proposed within the WNP. The above is in general conformity with the Wakefield Core Strategy and Site Specific Policies Local Plan. Important green spaces will be protected within the village under the National Planning Policy Framework approach to Local Green Space designation. Improvements to these facilities will be supported. The existing landscape characteristics of the WNP area will be protected and enhanced and a new wildlife corridor will be promoted along the mineral railway line. Existing heritage buildings, features and assets will be protected and enhanced. Knowledge of such heritage assets will be increased and support will be given for further local distinctiveness.

Improvements to the existing bus facilities within the village will be supported. Initiatives to reduce the impact of through traffic will be explored and implemented where they are locally supported. Footpath, cycle way and bridle path improvements will be supported where they facilitate a wider network connection or improvement.

The following policies have been developed in order to manage the future development of Walton in a way that achieves the Vision, Objectives and Strategy of the WNP. Decision-makers and Applicants must read the policies as a whole when judging if a proposal would be acceptable and early engagement with the Parish Council is strongly recommended.

The WNP is a community document and Section 3 and the Policies Map comprise the “Neighbourhood Development Plan” elements which comprise the Land use policies for decision making under the Town and Country Planning Acts.

3.2 ENVIRONMENT

Background and evidence

The WNP area comprises both the village and the surrounding countryside. Within the village there are a series of formal playing pitches, kick-about areas, an equipped play area and allotments. Outside the village are Walton Colliery Nature Park, Waterton Historic Park and Haw Park Woods along with surrounding agricultural land. Agriculture remains the principle rural activity though Walton also houses Waterton Park Golf Course, two golf driving ranges, stables and meadows.

Much of the countryside to the east of Walton comprises the historic Walton Hall and Waterton Park Estate, along with substantial wooded areas. To the north is the Walton Colliery Nature Park which is the restored former colliery spoil tip now used extensively as a country park. To the south and west is agricultural land which provides a hugely valuable function of separating Walton from Wakefield.



The Site Specific Policies Local Plan designates the countryside within the WNP area as follows:-

Local Nature Reserves

LNR 3 – Haw Park, Walton

LNR 16 – Walton Colliery Nature Park

Local Wildlife Sites

LWS 7 – Barnsley Canal, Walton

LWS 8 – Haw Park Wood and Brickyard Plantation

LWS 73 – Walton Park

LWS 74 – Hare Park Wood

Wildlife Habitat Network

Archaeological Sites

AS 94 – Class I Bridge and Medieval Gateway, Walton Hall

AS 101 – Class II Barnsley Canal Lock, Walton

AS 103 – Class II Stone Heaps, Adjacent to Barnsley Canal

Ancient Woodland

AW 20 – Haw Park Wood, Walton

Barnsley Canal

TS9

The WNP supports all these designations.

Extension to Wildlife Habitat Network

Consultation on the emerging Neighbourhood Plan confirmed that 94% of respondents to the Questionnaire supported the opportunity to extend the wildlife habitat network designation along the line of the former mineral railway within Walton Parish. A suitably qualified ecologist has evaluated this corridor and concluded that the corridor meets the criteria set out in the Wakefield LDF for wildlife network designation as:

- It connects designated sites of ecological conservation importance;
- It connects habitats listed as Biodiversity Action Plan priorities, such as watercourses, woodland, natural and semi-natural areas;
- It will allow migration, dispersal and genetic exchange of species in the wider environment

The following policy sets this out:

The Neighbourhood Plan Vision

POLICY I - EXTENSION TO WILDLIFE NETWORK

The wildlife habitat network is extended along the line of the mineral railway within the Walton Neighbourhood Plan area to create an ecological link between Walton Colliery Nature Park and Haw Park Woods as shown on the Policies Map.

Local Green Space

The NPPF (paragraph 76) introduced a new concept of a 'Local Green Space' designation to be made by inclusion within a Neighbourhood Plan. The NPPF indicates that this designation should only be used where;

'The land is not extensive, is local in character and reasonably close to the community and where it is demonstrably special for example because of its beauty, historic significance, recreational value, tranquillity or richness of its wildlife.'

Designation of Local Green Space also has to be consistent with local planning for sustainable development in the area. In particular, plans must identify sufficient land in suitable locations to meet identified development needs and the Local Green Space designation should not be used in a way that undermines this aim of plan making.

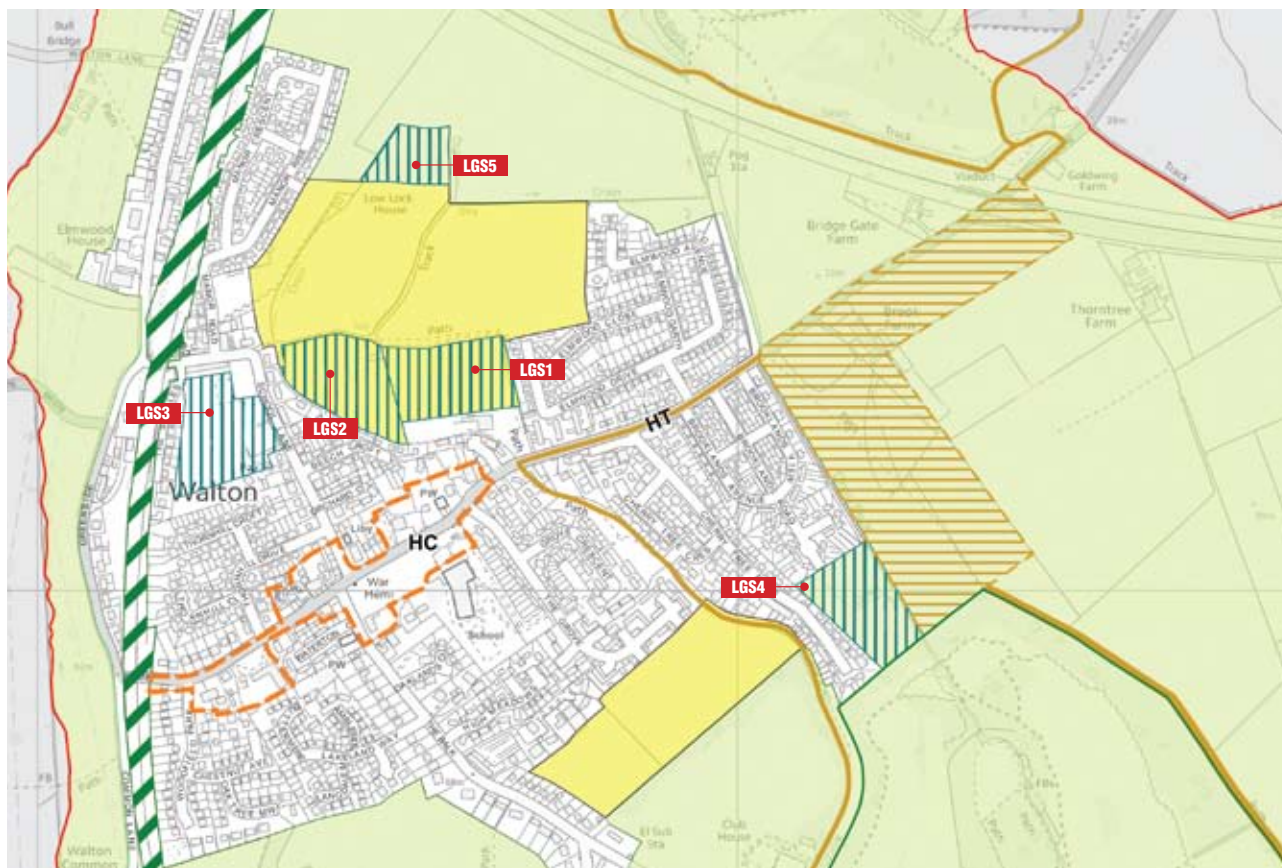
Wakefield's Site Specific Policies Local Plan (Sites Plan) identifies sufficient land in suitable locations to meet identified development needs across the District. The Plan also identifies land on the edge of settlements which may be suitable to meet longer term development needs, such as the land at The Grove (PAS12). However, the Core Strategy makes it clear that such land should not automatically be regarded as long term development land.

During the plan period, as a village, only small scale development will be permitted in Walton. With regards to sustainable development the Core Strategy sets out in policy CS5 the need to meet the needs of local communities with good quality local services and facilities. There are some facilities within the WNP area which are of particular importance to the local community and which make a significant contribution to sustainable development in the parish.

Consultation on the emerging WNP confirmed that 96% of respondents to the Questionnaire supported the need to identify new Local Green Space at the Waterways Land (PAS 13) site. Similarly 92% of respondents supported the protection of existing leisure and sporting facilities and 99% of respondents supported the safeguarding of existing community facilities including the recreation ground (School Lane Rec), playing fields and allotments. Some of the land and facilities are owned by the Parish Council and hence are protected by legal deed for the future use of parishioners. Other land is in private ownership or owned by Wakefield MDC. In accordance with the above, the WNP proposes to designate the following sites as Local Green Space:



The Neighbourhood Plan Vision



Site	Justification
Walton Community Centre Playing Fields (LGS1)	These playing fields are well related to the village and are the primary playing fields in the village. They comprise two full sized football pitches; a rugby pitch and a cricket pitch, some with floodlighting. They have full changing/clubhouse facilities and car parking. The Brownies/Guides meeting building is also located here. The playing pitches are very well used by teams within the village. Planning permission has been granted for a new Multi-use Games Area (MUGA) here and fund raising is being undertaken to deliver it.
Walton Allotments (LGS2)	These allotments are a tranquil place for allotment holders and are currently the only allotments in the village. They are well used by villagers and well related to the centre of the village.
School Lane Rec (LGS3)	This land comprises a full sized football field, informal play areas (including benches and hard surfaced paths) and equipped play areas comprising swings, climbing frames, a roundabout and a basketball court. It also includes Walton Tennis Club which comprises three full sized clay tennis courts. They are well related to the village and also comprise the Millennium Garden area which was created by villagers as a commemoration of the turn of the Millennium.
Brooklands Playing Area (LGS4)	This land comprises a mini football pitch (currently with only one goal post), informal recreational areas, two swings and a bench. It is closely related to the Brooklands and Cherry Tree estates which are the furthest distance from the other recreational facilities within the village. It therefore serves a local role for those estates.
Walton Jubilee Fields (LGS5)	This land comprises informal recreational areas closely related to the Manor Estate which is an estate on the edge of the village. It therefore serves a local role for this estate.

The Neighbourhood Plan Vision

POLICY 2 - LOCAL GREEN SPACE

In accordance with the National Planning Policy Framework, Local Green Space sites are to be retained in their current use and protected from inappropriate development other than in very special circumstances. Appropriate development will include sporting, leisure and recreational equipment and small scale buildings which are ancillary to their local green space function. The following sites are designated as local green spaces (as shown on the WNP Policies Map):

- **Walton Community Centre Playing Fields (LGS1)**
- **Walton Allotments (LGS2)**
- **School Lane Rec (LGS3)**
- **Brooklands Playing Area (LGS4)**
- **Walton Jubilee Field (LGS5)**

Improving Local Green Spaces

Consultation on the emerging Neighbourhood Plan confirmed that 92% of respondents to the Questionnaire supported the protection of existing sports pitches, informal recreation areas and equipped play areas. As well as their protection, strong support was given to their enhancement both through physical works (e.g. drainage improvements) but also through provision of other facilities such as goalposts at the Brooklands Playing Field and the creation of a Multi-Use Games Area (MUGA) and Skate Park at Walton Community Centre Playing Fields. Consultation on the emerging Neighbourhood Plan confirmed that 89% of respondents to the Questionnaire supported the creation of the Multi-Use Games Area (MUGA). Support is therefore given for improvements of these facilities.

POLICY 3 - IMPROVING LOCAL GREEN SPACE

Proposals to improve facilities at Walton's designated Local Green Spaces will be supported subject to:

- **Respect for Walton's Heritage;**
- **No adverse impact on residential amenity;**
- **Appropriate access and highway safety;**
- **No increase in flood risk or drainage problems;**
- **The protection and enhancement of ecology or biodiversity;**

New development requiring sports, leisure and recreation provision will be expected to demonstrate how it will contribute to these improvements.

Flood Alleviation

Consultation on the emerging Neighbourhood Plan confirmed that 96% of respondents to the Questionnaire supported the need to address existing flooding problems especially in areas such as Brooklands, Elmwood and School Lane. The WNP sets out within Section 4 (under the Delivery Plan), a series of project plans to further assess these issues and identify solutions. One specific area of potential flooding relates to Drain Beck along the eastern boundary of the village. Flooding of properties adjacent to Drain Beck (Brooklands and Elmwood) has occurred during extreme weather events. As part of the new sporting complex proposed at Brook Farm (planning approval 13/01530/FUL), flood alleviation measures are being proposed which should help to address this pre-existing flooding problem through the laying out and maintenance of detention basins. Planning permission has now been granted for this development (March 2014) though it has not yet been implemented.

The WNP does not propose a policy to address wider flooding concerns as further analysis needs to be undertaken of them. Policies 13 and 15 require new developments to address flood mitigation considerations so that they make the situation no worse and the outline planning permission for the Continuing Care Retirement Community requires it to provide appropriate flood mitigation of its own impact. Formal replacements of the WNP may identify policies to address flood mitigation if appropriate.

The Neighbourhood Plan Vision

3.3 HERITAGE

Background and evidence

Consultation on the emerging Neighbourhood Plan confirmed that 92% of respondents to the Questionnaire supported the Vision which indicated that Walton is proud of its heritage which it cherishes and wishes to enhance. Walton has many heritage buildings and features which are statutorily protected as Ancient Monuments, Listed Buildings or Archaeological Sites. Trees that are the subject of Tree Preservation Orders are also protected by the Council. *'Buildings of Local Interest'* are protected under Policy D19 of the Wakefield Development Policies LDF. All Listed Buildings, Ancient Monuments and Buildings of Local Interest are set out within the Wakefield document *'List of Listed Buildings, Scheduled Ancient Monuments, and Buildings of Local Interest'* dated February 2011. The WNP need add no further protection to these sites and buildings as statutory (and local) protection will ensure their future.

Historic Core

Consultation on the emerging Neighbourhood Plan confirmed that 98% of respondents to the Questionnaire supported the need to identify and protect key attributes of the village including heritage assets such as the War Memorial and the cluster of older buildings and street furniture around the junction of The Balk, Shay Lane, School Lane, and Thornhill. A Heritage Assessment of the character and history of these buildings has been undertaken. Walton does not contain a Conservation Area within the village despite the age, quality and historic significance of many of its core buildings. The WNP therefore identifies a *'Historic Core'* area which reflects the cluster of older buildings along Shay Lane, The Balk, and School Lane. This *'Historic Core'* will be the subject of special protection and any new developments will need to recognise the local distinctiveness and importance of the *'Historic Core'* in their location, scale, design and materials. Advice will be sought from Wakefield MDC as to whether this *'Historic Core'* satisfies the requirements to be designated as a Conservation Area. The key attributes of the *'Historic Core'* are the plot ratio, scale, design and materials of the older buildings; the boundary walling, sign posts and street furniture; and the street and garden trees.

Support will be given to the rationalisation and removal of existing unsympathetic street furniture and signage and its replacement with new street furniture that reflects the character of the historic core more appropriately.



The Neighbourhood Plan Vision

POLICY 4 - HISTORIC CORE

The historic core shown on the Policies Map will be the subject of special protection. Development affecting heritage assets within the historic core must pay special regard to the need to conserve and enhance their setting and any special architectural or historic features of significance. Any proposals within or affecting the setting of the historic core will be required to include a heritage impact assessment. All new development within the historic core or affecting its setting must demonstrate good quality design. This means responding to and integrating with the landscape context and existing built environment. Specific regard must be paid to:

- **Achieving high quality design that respects the scale and character of existing and surrounding buildings;**
- **Respecting established key views of heritage assets, existing historic building lines and arrangements of front gardens, walls, railings or hedges;**
- **Using high quality materials that reflect the historic character and existing palette of materials used within the historic core.**

Support will be given for development that respects the character and appearance of the historic core and which takes the opportunities available for improving the local character and quality of Walton.

Waterton Historic Park

Consultation on the emerging Neighbourhood Plan confirmed that 98% of respondents to the Questionnaire supported the need to identify and protect key attributes of the village including Heritage assets such as Walton Hall and its links with Squire Charles Waterton. Walton Hall is now a hotel (Waterton Park Hotel) and it sits within Waterton Park which is currently identified as a Local Wildlife Site (LWS 73) but is not recognised as a Historic Park or Garden. Waterton Park is reputed to be the world's first Nature Reserve and is of great historic significance both locally and nationally. Advice will be sought from English Heritage as to whether Waterton Park satisfies the requirements to be designated as a 'Historic Park' in accordance with Policy D18 of the Development Policies LDF. The English Heritage Guidance Note 'The Register of Parks and Gardens' indicates that '*sites having an association with significant persons or historic events*' is one of the criteria used when designating Historic Parks and Gardens. The WNP therefore identifies Waterton Park as 'Waterton Historic Park' as the WNP Heritage Assessment shows that Waterton Historic Park fits this criterion well. Irrespective of the outcome of English Heritage's assessment, the following policy will apply:

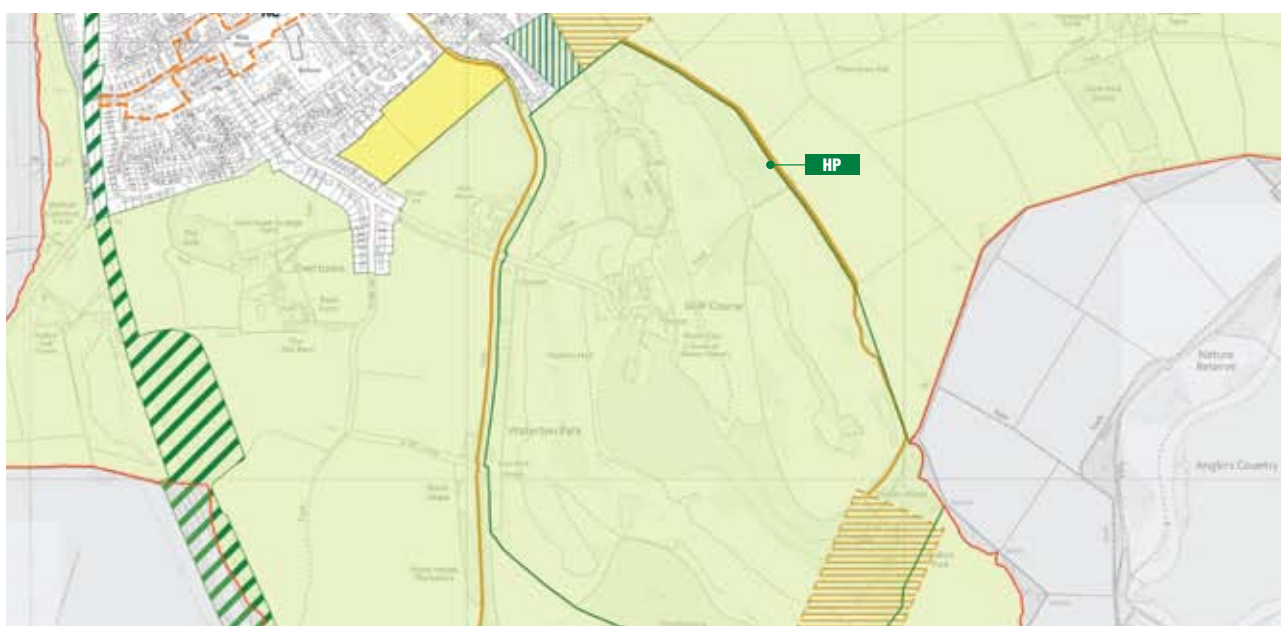


POLICY 5 - WATERTON HISTORIC PARK

Waterton Historic Park (as shown below) will be the subject of special protection. Development within or likely to affect Waterton Historic Park will only be permitted where there is no adverse impact on:

- **Open spaces, views, landmarks and landscape that contribute to its character, appearance or setting;**
- **The character of any buildings or structure having regard to local scale, proportion, details and materials;**
- **The preservation of features of architectural, archaeological and historic interest.**

Any development proposals within or adjacent to it that may affect the character or setting of Waterton Historic Park will be required to include a Heritage Impact Assessment.



Public Access to Heritage Buildings and Facilities

Consultation on the emerging Neighbourhood Plan confirmed that 96% of respondents to the Questionnaire supported the opportunity to open up public access to Heritage Buildings and Facilities. There are currently several footpaths through Waterton Historic Park but not to all the Heritage Assets. Policy 9 (Provision of new footpaths, cycle ways and bridle paths) proposes a new footpath connection between Waterton Historic Park and Haw Park Wood which could open up public access to Squire Waterton's Grave. Public access to the heritage buildings themselves to widen understanding and knowledge of the history of Walton is also desirable. Section 4 of the WNP identifies a project to assess the opportunities to provide public access to heritage buildings within Walton.

Walton Colliery Nature Park Heritage Trail

The heritage of Walton also includes the mining era. The former Walton Colliery site has been restored to become Walton Colliery Nature Park. Proposals for a Heritage Trail around the Walton Colliery Nature Park and Memorial to those who lost their lives in the 1959 disaster are being progressed. The following policy sets this out:

POLICY 6 - WALTON COLLIERY HERITAGE TRAIL

Proposals for the creation of the Walton Colliery Nature Park Heritage Trail (HT) within the Walton Neighbourhood Plan will be supported. New development affecting the route of this trail within the Walton Neighbourhood Plan area should demonstrate how it will contribute to and be compatible with it.

Walton Heritage Trail

The proposed Walton Colliery Nature Park Heritage Trail could be extended to link to Waterton Historic Park and Haw Park Woods to enhance the understanding of Walton for residents and to attract new visitors to Walton who would be encouraged to spend locally at the village's services. Policy 9 (Provision of new footpaths, cycle ways and bridle paths) proposes a new footpath connection between Walton Colliery Nature Park and Waterton Historic Park to facilitate this. The following policy sets this out:

The Neighbourhood Plan Vision

POLICY 7 - WALTON HERITAGE TRAIL

Proposals to extend the Walton Colliery Nature Park Heritage Trail to Waterton Historic Park and Haw Park Woods will be supported. New developments affecting the route of this trail should consider how they could contribute to and be compatible with it.

Barnsley Canal

The Barnsley Canal passes through the WNP area. The alignment of the Barnsley Canal is safeguarded under Policy TS 9 of the Wakefield Site Specific Policies Local Plan. A study referred to in the Wakefield Local Plan, concluded that restoration of the Canal is feasible but at very high cost. The Local Plan policy supports the restoration of the Canal and also safeguards land occupied by and adjacent to the Canal for cycling or footpath networks. The WNP supports this approach and does not therefore need a separate policy to replicate this.



3.4 ACCESSIBILITY AND LINKAGES

Background and evidence

Walton is not a self-contained settlement and instead relies upon other settlements especially Crofton and Sandal/Kettlethorpe for its higher order shopping, medical and education requirements. There are very few employment opportunities within Walton and hence many residents commute to their place of work in other main centres. Walton therefore has a heavy reliance upon the private car and public transport. Whilst Walton is physically separated from all other settlements, its main roads (especially Shay Lane, School Lane, Greenside, Oakenshaw Lane and Common Lane) are used by traffic seeking to access Wakefield or by-pass other congested routes. Walton also has access to countryside via existing footpath, cycle way, or bridle path connections which is a key benefit of the village. Accessibility and linkage are therefore key aspects for the WNP to address. Consultation on the emerging Neighbourhood Plan confirmed that 96% of respondents to the Questionnaire supported the need to improve footpath and cycle linkages and to complete missing footpath linkages.

Walton is often congested during periods of peak travel. This can be exacerbated at school drop-off periods when parking provision is inadequate. Many of the road junctions into and out of Walton suffer from poor visibility. Many footpaths along the main village roads are narrow in places or are affected by overhanging trees and bushes. Many of the pedestrian routes that people choose to use do not accord with existing road crossing points which means that being a pedestrian in Walton can be problematic. Traffic-calming initiatives within Walton have sought to address problems of traffic speed but have not been wholly successful. Consultation on the emerging Neighbourhood Plan confirmed that 86% of respondents to the Questionnaire supported the need to address these concerns but there was no common view on the best solution. The WNP sets out within Section 4 (under the Delivery Plan), a series of Project Plans to further assess these issues and identify solutions.

The Neighbourhood Plan Vision

The WNP does not therefore currently propose a policy to address these concerns as further analysis needs to be undertaken. Policies 13 and 15 require new developments to address highway and transport considerations so that they make the situation no worse and the outline planning permission for the Continuing Care Retirement Community (Ref:11/01749/OUT) requires it to provide appropriate traffic calming to mitigate its own impact. Similarly, as part of the new sporting complex proposed at Brook Farm (planning approval 13/01530/FUL), traffic calming is being proposed to Shay Lane which should help to address traffic speeds in this location. Planning permission has now been granted for this development (March 2014) though it has not yet been implemented.

A future replacement of the WNP may identify policies to address congestion and safety if appropriate. A Traffic Management Study and potential car parking enhancements to the Village Centre are proposed within the projects listed in Policy 17.

Improvements to existing footpaths, cycle ways and bridle paths

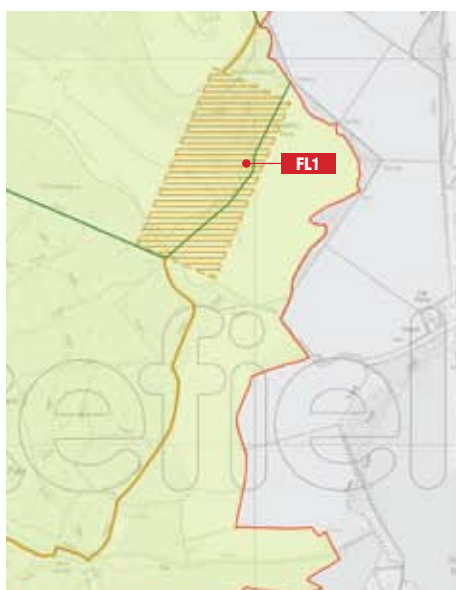
The WNP seeks to secure enhancement of existing footpaths, cycle ways, and bridle paths. This will relate to roadside footpaths where they are substandard in width or safety (including lighting) especially where they link to key destinations such as schools, shops or to public transport. They also relate to field footpaths such as that to the north of the Walton Community Club playing fields and that north of Stubbs Wood which are proposed to be improved within the projects listed in Policy 17.

POLICY 8 - IMPROVEMENTS TO EXISTING FOOTPATHS, CYCLE WAYS AND BRIDLE PATHS

Proposals to improve existing footpaths, cycle ways and bridle paths including provision/upgrades of crossing points of existing roads will be supported. Developments which increase the pedestrian footfall or cycle usage in these locations will be expected to contribute to these enhancements.

Provision of new footpaths, cycle ways and bridle paths

The WNP seeks to deliver new footpaths, cycle ways, and bridle paths where they complete a missing link between existing routes. Two specific new routes are proposed:-



FL1 Stubbs Wood Footpath Link - From Waterton Historic Park to Haw Park (via Stubbs Wood). There is currently no direct link between Waterton Historic Park and Haw Park Wood (other than via more diverse routes). This proposed new footpath would link Waterton Historic Park to Haw Park Wood. There is currently a track (past Squire Waterton's Grave) through Stubbs Wood but this is private land. The proposal is to utilise this track and extend it to the Trans Pennine Trail (within Haw Park Wood) in order to complete the link. Agreement to the link and its precise alignment would be needed from the Waterton Park Hotel and the Golf Club and care would be needed to ensure there is no conflict between walkers and golfers, and no adverse impact upon ancient woodland or ecology.



FL2 Brook Farm Footpath Link - From Walton Colliery Nature Park to Waterton Historic Park (via Brook Farm). This is the opportunity to link Walton Colliery Nature Park to Waterton Historic Park as part of the Walton Heritage Trail (see Policy 7). As part of the new sporting complex proposed at Brook Farm (planning approval 13/01530/FUL), footpath widening is proposed along Shay Lane which should help to improve linkage. Planning permission has now been granted for this development (March 2014) though it has not yet been implemented. If this goes ahead, the Parish Council will continue to work with Wakefield Council to seek to provide a more direct footpath between Walton Colliery Nature Park and Waterton Historic Park so that users do not have to walk along the busy footpath along Shay Lane. The existing car park at Walton Colliery Nature Park would be the main vehicular starting point for the Heritage Trails. The route of the proposed footpath link will take into account the safeguarded route for the Barnsley Canal proposal.

The Neighbourhood Plan Vision

POLICY 9 - PROVISION OF NEW FOOTPATHS, CYCLE WAYS AND BRIDLE PATHS

Proposals to deliver new footpaths, cycle ways and bridle paths as shown on the Policies Map will be supported. New development affecting these routes should demonstrate how they will contribute and be compatible with them. Developments which increase the pedestrian footfall in these locations will be expected to contribute to delivery of these routes.

Public transport

Public transport provision within the parish is generally good. The bus service through the village is regular and provides good linkage to higher order settlements. Improvements to existing bus shelters and provision of real-time bus travel information will be supported. The nearest train station is at Sandal/Agbrigg some 1.5 miles away. Enhancements to the pedestrian, cycle and bridleway network from Walton to Sandal/Agbrigg station will be supported under Policy 8.

POLICY 10 - PUBLIC TRANSPORT

Developments which are likely to increase the patronage for bus services will be expected to contribute to bus service enhancements such as improving existing bus shelters and provision of real-time bus information.



The Neighbourhood Plan Vision

3.5 HOUSING

Background and evidence

Walton currently has a population of 3231 within 1430 dwellings. Nearly half (658) of these dwellings are semi-detached with approximately one third (483) being detached houses. The majority of households own their own property (1098) with 164 in social rented and 84 in private rented accommodation.

The Wakefield Core Strategy policy CS1 confirms that within villages, only small scale development should take place;

'Where it helps to meet identified local needs within the existing boundaries of the settlement.'

Policy CS3 restricts any new housing site to be for a maximum of 10 dwellings. Policy CS3 also indicates that for the period after 2022, high priority will be given to further development of Wakefield and the Five Towns. The Site Specific Policies Local Plan does not allocate any housing sites within Walton. In the above context the WNP should:-

- Not allocate any new housing sites both up to and beyond 2022;
- Restrict any new housing site on a 'windfall' site to a maximum of 10 dwellings to meet an identified local need.

The WNP will therefore provide policies to:-

- Address the two Protected Area of Search Sites in Walton which are retained in the Site Specific Policies Local Plan;
- Address 'windfall' sites that are brought forward by applicants.

Protected Areas of Search

The Site Specific Policies Local Plan retains two sites identified as Protected Area of Search for Long Term Development (PAS). These are known as:

- PAS 12 – Grove House Farm, The Grove, Walton (4.8ha)
- PAS 13 – Waterways Land (13.17ha)

The Site Specific Policies Local Plan confirms in paragraph 14.12 that PAS sites;

'... should not automatically be regarded as long term development land. Reviews of LDF documents may consider the suitability of safeguarded land, but in the meantime development would be restricted to that which is necessary for the operation of existing uses, or to such temporary uses as would not prejudice longer term development needs.'

Paragraph 14.13 notes that;

'... the suitability of safeguarded land will necessarily include an assessment of the need for housing and employment land in the context of the over-arching spatial development strategy set out in the Core Strategy at the time of such an assessment.'

The WNP provides an opportunity to review the role and relevance of the two PAS sites within Walton. The Core Strategy Policies CS1 and CS3 confirm that villages are not suitable for large scale development. No housing or employment allocations have been made in the Site Specific Policies Local Plan which reflects the inability of villages such as Walton to sustainably accommodate large scale growth. This WNP has not identified any community development needs that cannot be accommodated within the settlement boundary. Policy CS3 requires housing in villages to be for local needs up to a maximum scheme size of 10 dwellings. The WNP therefore concludes that there is no identified housing or employment land need for Walton that requires the PAS sites to be developed within the WNP Plan Period (2014 – 2026). The Grove site is 4.8ha and the Waterways site is 13.17ha and hence they are substantially out of kilter with the scale of development envisaged by the Core Strategy, Site Specific Policies Local Plan and this WNP. Consultation on the emerging Neighbourhood Plan confirmed that 95% of respondents to the Questionnaire supported the retention of the PAS site at The Grove, Walton as safeguarded land and 96% supported the removal of the Waterways Land PAS site and its re-designation as Green Belt, and Local Green Spaces. Notwithstanding the above, the WNP recognises that Protected Area of Search policies are 'Strategic Policies' which according to the NPPF, a Neighbourhood Plan must reflect and be in general conformity with. The WNP cannot therefore propose the deletion of PAS sites outside of a wider Local Plan review.

The Neighbourhood Plan Vision

PAS site 12 – Grove House Farm, The Grove, Walton is proposed to be retained as PAS and could come forward within the Plan Period as a Continuing Care Retirement Community because it benefits from outline planning permission (Ref:11/01749/OUT). Consultation on the emerging Neighbourhood Plan confirmed that 95% of respondents to the Questionnaire supported the retention of the PAS site at The Grove, Walton as safeguarded land but in the same response also accepted that this planning permission for a maximum of 129 Continuing Care Retirement Units can be implemented subject to strict compliance with all planning conditions and the Section 106 Agreement provisions. Specifically this permission requires provision of traffic calming, medical and chemist facilities (for the over 55s) and provision of 10 allotments. The WNP retains the site as PAS but Policy 11 further restricts the acceptable uses to being for agricultural or recreational uses or the implementation of the Continuing Care Retirement Community permission (Ref:11/01749/OUT). This is because access to the site is via The Grove and specifically past the village school and through an aged persons' development. Other 'temporary uses' are therefore excluded from being acceptable for this land (in policy terms) due to their potential effect upon the safety of school children and amenity of residents of the existing aged persons' development. If an applicant proposes other temporary uses on the site, then it would be for the applicant to demonstrate that such temporary uses would have no adverse effect upon the safety of school children and amenity of those living in the aged persons' development. Policy 11 restricts such uses unless an applicant can demonstrate their suitability.

POLICY 11 - THE GROVE PROTECTED AREA OF SEARCH SITE

The land at The Grove, Walton (identified on the WNP Policies Map) is to be retained as Protected Area of Search. Any development of it during the WNP plan period will be restricted to the operation of agricultural or recreational uses or to a Continuing Care Retirement Community. Applicants proposing any temporary use of the site would have to show that such a use would have no adverse effect upon the safety of children at The Grove School and the amenity of aged persons living at The Grove, and that such temporary development would not prejudice the future development of the PAS 12 site.

Waterways Land (PAS 13) site

The majority of the countryside surrounding Walton is designated as Green Belt in the Local Plan. Consultation on the emerging Neighbourhood Plan confirmed that 99% of respondents to the Questionnaire supported the need to safeguard the setting of the village by protecting the key Green Belt countryside areas that separate Walton from the nearby settlements of Sandal, Crofton, Heath and Ryhill. Similarly 96% of respondents did not support the retention of the PAS site (PAS 13 – Waterways Land, Walton) and would like to see the Waterways Land (PAS 13) site included within the Green Belt. The National Planning Policy Framework (NPPF) indicates that the essential characteristics of Green Belt are their openness and permanence. It notes in paragraph 80 that Green Belts serve 5 purposes:-

- To check the unrestricted sprawl of large built up areas;
- To prevent neighbouring towns from merging into one another;
- To assist in safeguarding the countryside from encroachment;
- To preserve the setting and special character of historic towns;
- To assist in urban regeneration by encouraging the recycling of derelict and other urban land.

The NPPF indicates that Green Belts should only be altered in exceptional circumstances through the preparation or review of the Local Plan. The NPPF indicates that when defining boundaries, Local Planning Authorities should ensure consistency with the Local Plan strategy for meeting identified requirements for sustainable development. Housing development of 13.14ha in the village of Walton is out of kilter with the Core Strategy approach and would not therefore constitute sustainable development. The WNP therefore considers that it may be more appropriate to re-designate the site as Green Belt as the site forms part of a wider open countryside area to the north of Walton. Its designation as Green Belt would therefore check the unrestricted sprawl of the built up area of Walton and also assist in safeguarding the countryside from encroachment. Its designation as Green Belt would therefore accord with the purposes of Green Belt as set out in the NPPF. The NPPF confirms that Green Belt boundaries should be permanent and use physical features that are readily recognisable. The current Site Specific Policies Local Plan Green Belt/PAS 13 site boundary (along the northern edge of the PAS site) is not a readily recognisable feature; rather it crosses open agricultural land and is delineated by a small ditch and sparse hedgerow. If the Waterways Land (PAS site) were included within the Green Belt, the new boundaries would utilise readily recognisable features. These would comprise the rear boundaries of properties off The Manor Estate, Beech Croft and Elmwood Estate and the significant slope to the north of Walton Community Centre. Such Green Belt boundaries would therefore accord with NPPF guidance.

Notwithstanding the above, the WNP recognises that Protected Area of Search policies are 'Strategic Policies' which the Neighbourhood Plan must reflect and be in general conformity with, according to the NPPF (paragraph 184). The WNP cannot therefore propose the deletion of PAS sites outside of a wider Local Plan review but the WNP would strongly support the re-designation of the PAS 13 site from PAS notation to Green Belt as part of the Local Plan review. The WNP therefore proposes the following policy.

The Neighbourhood Plan Vision

POLICY 12 - WATERWAYS LAND (PAS 13) SITE

The Waterways Land site is Protected Area of Search (PAS 13) within the Wakefield Local Plan and hence is subject to Policy D2 of the Wakefield Development Policies Document which prevents permanent development of it during the Local Plan period. The WNP identifies two sites of Local Green Space (LGS1 and LGS2) within the PAS 13 site which will be subject to the provisions of Policies 2 and 3. Any development of the residual area of PAS 13 during the WNP period will be restricted to the operation of agricultural or recreational uses. Applicants proposing any temporary use of this part of the site would have to show no adverse effect upon the operation, use and enjoyment of the Local Green Spaces (LGS1 and LGS2), or prejudice to the future potential development of the PAS 13 site.

New 'windfall' housing

Consultation on the emerging Neighbourhood Plan confirmed that 89% of respondents to the Questionnaire supported the need for small scale housing schemes. Such 'windfall' housing schemes (housing which takes place on land not specifically allocated in the Local Plan) within the village boundary will therefore be supported provided that they accord with Policy CS3 of the Core Strategy and paragraphs 3.13 – 3.16 of the Development Policies LDF. The latter specifically supports 'windfall' housing if it comprises the re-use of previously developed land. The responses on this subject in the Questionnaire supported the need for new housing development to meet local needs (including affordable needs) but that it should be responsive to its context and respect the local distinctiveness and character of Walton. Policy 13 therefore facilitates this:

POLICY 13 - NEW WINDFALL HOUSING SITES

All housing proposals should:-

- Be for local needs;
- Include an element of affordable housing as required by Wakefield Core Strategy;
- Be on sites capable of accommodating no more than 10 dwellings;
- Include an assessment of their contribution to local distinctiveness and respect Walton's heritage assets;
- Be of an appropriate height to respect amenity and townscape (usually no greater than 2 storeys in height);
- Protect and enhance nature conservation, watercourses, wildlife habitat, trees and landscape character;
- Provide appropriate access and highway safety;
- Not lead to increases in flood risk or drainage problems;
- Be adaptable to support the needs of the aging population;
- Be designed to ensure a safe and secure environment that reduces the opportunity for crime;
- Comprise sustainable forms of construction;
- Demonstrate that proper consideration has been given to employment and community uses before residential;
- Not comprise residential gardens where the proposal is of a form or density which would cause harm to the amenities of the surrounding dwellings.



The Neighbourhood Plan Vision

3.6 VILLAGE SERVICES AND FACILITIES

Background and Evidence

Walton accommodates a level of services and facilities which are proportionate to a village of its scale. Historically it has accommodated independent retailers and medical/chemist facilities but with increasing mobility of residents and competition from elsewhere, these have been lost over the last two decades. The primary retail destination for comparison (fashion, shoes and electrical goods) shopping is Wakefield City Centre though significant comparison goods are also available at ASDA at Sandal/Kettlethorpe District Centre. Local convenience (food) shopping can be undertaken within Walton though increased choice and scale are available at Crofton and at ASDA and ALDI at Sandal. Walton also has a Post Office, newsagents, two hairdressers, and a hot food takeaway. The village is also well served by the New Inn (local Pub), Waterton Park Hotel (hotel, restaurant and leisure club) and Waterton Park Golf Club and Restaurant. The village also has a Community Library, Community Centre, Village Hall, two churches, and a Care Home. There are many clubs and societies in the Parish and a wide range of sporting clubs and facilities. The village also benefits from a relatively new Primary Academy which acts as a 'hub' for the villagers, though secondary schooling is not available within the village.

Safeguarding existing services

To ensure the ongoing prosperity of the Parish, it is essential that Walton retains and provides local services that sustain the vitality of the community and encourage local spending. Policy CS5 of the Core Strategy provides a policy framework to safeguard existing services unless satisfactory alternative provision is made.

Consultation on the emerging Neighbourhood Plan confirmed that 99% of respondents to the Questionnaire supported the need to safeguard existing community facilities and 92% supported the need to protect and safeguard existing leisure and sporting facilities.

Policy CS5 of the Core Strategy is therefore further strengthened by Policy 14 below:

POLICY 14 - SAFEGUARDING EXISTING SERVICES

The change of use of shops, leisure, sporting and community facilities will only be permitted if it can be demonstrated that reasonable efforts have been made to secure their continued use for these purposes and/or alternative provision is made.

Providing new services

Consultation on the emerging Neighbourhood Plan confirmed that 91% of respondents to the Questionnaire supported the development of new small-scale facilities that would complement those already being provided. No significant need for new retail facilities has been identified in the emerging Wakefield Retail Development Plan Document. Local people have however supported the provision of small-scale food/drink, medical/chemist, and automated banking (cashpoint) provision within the village. They have also supported opportunities to improve/replace the Guides/Brownies facility, enhance signage within the village as well as provision of additional dog fouling and litter bins as proposed within the projects listed in Policy 17. Provision of such uses would support the needs of Walton's aging population. There is currently no clearly defined Village Centre within Walton and shopping and services are generally split between an area at School Lane and an area along Shay Lane/Cherry Tree Road. The preferred location of any future food/drink, medical/chemist and cashpoint facilities would be as close as possible to either of these shopping/service areas to reinforce them as meeting points within the village.





POLICY 15 - PROVIDING NEW SERVICES

Developments that support the vitality and viability of Walton village centre by diversifying and enhancing the range of services and facilities for the local community will be allowed provided that they:

- **Include an assessment of their contribution to local distinctiveness and respect Walton's heritage assets;**
- **Are of an appropriate scale so as not to undermine local services;**
- **Are of an appropriate height to respect amenity and townscape (usually no greater than 2 storeys in height);**
- **Protect and enhance nature conservation, watercourses, wildlife habitat network, trees, woodland and landscape character;**
- **Are not on sites of Local Green Space;**
- **Provide appropriate access and highway safety;**
- **Will not lead to increases in flood risk or drainage problems;**
- **Be adaptable to support the needs of the aging population;**
- **Be designed to ensure a safe and secure environment that reduces the opportunity for crime;**
- **Comprise sustainable forms of construction.**

Provision of new allotments and community gardens

Consultation on the emerging Neighbourhood Plan confirmed that 98% of respondents to the Questionnaire supported the need to protect key village attributes and 99% supported the need to protect the current allotments within the village. Policy 2 provides this protection through their designation as Local Green Space. The Parish Council have been approached by a number of residents requesting allotments which cannot currently be met. Whilst therefore there is a need for new allotments, it is difficult to quantify the exact need as this is dependent upon supply. Consultation on the emerging Neighbourhood Plan confirmed that 89% of respondents to the Questionnaire supported the need for new allotment and community garden provision. Provision of 10 allotments may be achieved through the outline permission (Ref 11/01749/OUT) for a 129 unit Continuing Care Retirement Community at The Grove. Walton residents overwhelmingly supported this planning application and hence in accordance with those views, the WNP supports its development. As part of the new sporting complex proposed at Brook Farm (planning approval 13/01530/FUL), provision of up to 40 new allotments may also be secured. Planning permission has now been granted for this development (March 2014) though it has not yet been implemented. If this goes ahead, the Parish Council will continue to work with Wakefield Council to seek to secure the delivery of allotments in this location. Support will also be given for other new allotment and community garden provision, to complement the existing provision.

POLICY 16 - PROVISION OF NEW ALLOTMENTS AND COMMUNITY GARDENS

The provision of new allotments and community gardens will be supported. Residential Developments of a scale which increase the need for new allotments will be encouraged to contribute to new allotment and community gardens provision.

4.1 FUNDING AND IMPLEMENTATION

The Walton Neighbourhood Plan (WNP) will be delivered and implemented over the Plan Period (2014 – 2026). It seeks to provide the focus for change within Walton but is not a rigid 'blue-print' but rather is a 'framework for change'.

The WNP will be delivered through the exercise of the various policies contained within it by decision makers, specifically applicants for planning applications and Wakefield MDC as the determining body for those applications (or the Secretary of State in the case of an Appeal). Through the Community Infrastructure Levy (CIL), Planning Conditions and Section 106 Agreements, Applicants will be required to contribute towards the delivery of those projects listed in the Project Plan where such a contribution meets the legal tests set out in the Community Infrastructure Levy Regulations through Section 106 Agreements and Planning Conditions. Once CIL is implemented by a Local Authority, Section 106 Agreements will mitigate site impacts only and instead developers will have to make CIL payments towards improving infrastructure. Currently Wakefield MDC has not implemented CIL, though draft Charging Schedules have been published for consultation. Once implemented, generally 15% of CIL contributions are given to the Parish Council to spend on local projects where the development is being constructed but where there is a Neighbourhood Plan in place this is increased to 25% of CIL contributions. Walton Parish Council will receive 25% of CIL contributions within the Parish Boundary if the WNP secures the consent of local people in a Referendum and is as a result 'made' as laid out in planning law when an if a CIL Charging Schedule is approved and published by Wakefield Council.

POLICY 17 - COMMUNITY AND INFRASTRUCTURE LEVY

CIL contributions that are apportioned to the Parish Council (if CIL is approved and published by Wakefield Council) along with other sources of funding as appropriate, will be used to deliver the following infrastructure and community projects:

- 1). Enhancements to car parking in the village centre (Policy 15);
- 2). A traffic management study (Policy 8);
- 3). Improvements to existing bus shelters and provision of real time information (Policy 10)
- 4). Provision of a new footpath between Waterton Historic Park and Haw Park Woods (Policy 9)
- 5). Provision of a new footpath between Waterton Historic Park and Walton Colliery Nature Park (Policy 9)
- 6). Provision of and enhancements to the Walton Colliery Nature Park Heritage Trail (Policy 7)
- 7). An ATM/cashpoint (Policy 15)
- 8). Provision of dog fouling and litter bins (Policy 15)
- 9). New Allotments (Policy 16)
- 10). Improvements to Walton Community Centre Playing Fields (Policy 3)
- 11). Improvements to School Lane Rec (Policy 3)
- 12). Improvements to Brooklands playing area (Policy 3)
- 13). Improvements to Jubilee Fields (Policy 3)
- 14). Enhancements to village signage (Policy 15)
- 15). Improvements to the existing footpath north of Walton Community Club Playing Fields (Policy 8)
- 16). Improvements to the existing footpath north of Stubbs Wood (Policy 9)
- 17). Provision of a new Guides/Brownies facility (Policy 15)
- 18). Provision of and enhancements to the Walton Heritage Trail (Policy 7)
- 19). Contributions to the enhancement and creation of green infrastructure and open green space (Policy 3)

The following policy relates to the situation before Wakefield MDC adopts a Community Infrastructure Levy Charging Schedule.

Delivery Plan

POLICY 18 - SECTION 106 AGREEMENTS AND PLANNING CONDITIONS

Planning applications for development submitted before the approval and publication of a Wakefield Council Community Infrastructure Levy Charging Schedule will have any negative impacts mitigated (in accordance with the CIL regulations) through appropriate conditions and section 106 agreements which will facilitate the delivery of any directly related infrastructure and community projects identified in Policy 17 of the WNP.

The WNP will also be delivered in pro-active ways through investment in, and management of, public services to the benefit of the community of Walton. Opportunities for direct public-sector funding will be explored to deliver the projects set out within the WNP. Opportunities for funding will become available through the New Homes Bonus which is money given to Councils where new housing development is built. Further funding sources could be available through Heritage Lottery or through the Big Lottery Fund. Some funding is also potentially available directly from Wakefield Council via the Neighbourhood Improvement Fund (formerly Community Chest) and Fit4funding. Finally the Parish Council also has some limited funds to support priority projects. Private businesses may be encouraged to support community initiatives or sponsor projects. Several buildings may be key assets for the community in terms of the role and importance that they have for the daily lives and activities of members of the community. These are often privately owned buildings such as the Walton Community Centre and local pub or publicly owned assets such as the Village Hall. These may be capable of being considered as 'Assets of Community Value' under recent Government legislation, though the WNP does not seek to identify such assets individually at this stage. Whether these buildings are 'Assets of Community Value' and whether the community would wish to purchase them if they are offered for sale would be considered on a case by case basis as the need arises. In addition to the above, voluntary bodies will have a strong role to play in delivering the WNP. This may be through the creation of forums and direct voluntary actions or through lobbying for change. Community support by using local facilities and supporting village life is also fundamentally important to create a community which we are all proud of.

High Speed 2 Rail (HS2)

The proposed alignment of the Government's High Speed 2 Rail (HS2) connection between London and Leeds has been announced. It is currently the subject of consultation and has not yet been fixed or made the subject of a Safeguarding Order. It is proposed to pass through the edge of Waterton Historic Park (and the Local Wildlife Site, LWS 73). Consultation on the emerging Neighbourhood Plan confirmed that 88% of respondents to the Questionnaire objected to the proposed HS2 alignment and supported measures to mitigate the impact of HS2 if the project proceeds. Such mitigation measures include alternative alignments which do not adversely affect Waterton Historic Park. As a piece of National Infrastructure, however the WNP cannot object to it in policy terms, though the WNP identifies a project to assess the impact of it upon Walton and to seek to resist its current alignment and/or mitigate its impact.

The following is a list of all the proposed Projects being considered for action;

4.2 SUMMARY TABLE OF PROJECTS

Priority	Theme	Title	Description	Potential Funding	Lead Organisation
I	Village services and Accessibility	Better parking, especially for school drop off/pick up	Potential dual use of Walton Community Club Car Park	WMDC/CIL	Parish Council
I	Accessibility, Heritage and Village Service	Traffic Management Study	Opportunities for traffic management; alleviating congestion; one way systems; school drop off restrictions/ parking opportunities; village entrance features; junction / crossing point/footpath improvements; speed restrictions.	WMDC/CIL	Parish Council
I	Accessibility	Bus shelter improvements and real time information	Support funding initiatives for improvements including from The Grove and Brook Farm developments.	WMDC/CIL/Metro	Parish Council
I	Accessibility and Heritage	New Footpath	New footpath between Waterton Historic Park and Haw Park Woods (see Policies Map)	WMDC/CIL	WMDC/Parish Council/ Wakefield Cycle Forum
I	Accessibility and Heritage	New Footpath	New footpath between Walton Colliery Nature Park and Waterton Historic Park (see Policies Map) as part of Brook Farm development.	WMDC/CIL	WMDC/Parish Council/ Wakefield Cycle Forum

Delivery Plan

4.2 SUMMARY TABLE OF PROJECTS

Priority	Theme	Title	Description	Potential Funding	Lead Organisation
1	Heritage	Waterton Historic Park	Liaise with English Heritage to assess the potential to designate Waterton Historic Park		Parish Council/English Heritage
1	Heritage	Walton Colliery Nature Park Heritage Trail	Liaise with Friends Group	WMDC/CIL	Parish Council
1	Heritage and Environment	High Speed 2 Rail	Object to alignment		Parish Council
1	Environment	Flood Alleviation	Opportunities for balancing facilities as part of WMDC development at Brook Farm. Explore other flooding issues.		WMDC/Parish Council
1	Environment	Trees/bushes along roads/paths	Liaise with WMDC/write to owners of trees/bushes that overhang.		Parish Council
1	Environment	Litter picking groups	Liaise with Offenders Team and support regular working parties		Parish Council
1	Village services and Environment	Walton Community Centre Playing Fields	Support funding initiatives for provision of MUGA and Skate Park	WMDC/CIL	Friends Group
1	Village services	New Facilities	Explore potential for new Medical/ Chemist, ATM, and Food/Drink Facilities. Walton Community Centre site?	Private Developers	Private Developers with Parish Council support
1	Village services and Environment	Provision of additional Dog Waste Bag Dispensers in Rec. and Litter Bins along Canal Path and other footpaths.	Consider both capital cost and maintenance	WMDC/Parish Council	WMDC/Parish Council
1	Village services	Support Village Gala and other events.			Parish Council
1	Village services	Community Volunteering service			Parish Council
1	Housing	The Former School site	Liaise with Developers	Private Developers	Parish Council
1	Housing	The Grove site	Liaise with Developers	Private Developers	Parish Council
2	Village services and Environment	New Allotments	Explore opportunity to deliver new allotments either at The Grove development, Brook Farm development or elsewhere.	WMDC/CIL/Private developers	Parish Council
2	Village services	Support for Local Businesses	Buy Local Initiative	-	Parish Council
2	Village services and Environment	School Lane Rec	Support funding initiatives for improvements	WMDC/CIL	Parish Council
2	Village services and Environment	Brooklands Playing Area	Support funding initiatives for improvements e.g football goalposts	WMDC/CIL	Parish Council
2	Village services and Environment	Walton Jubilee Fields	Support funding initiatives for improvements	WMDC/CIL	Parish Council
2	Village services, Accessibility and Heritage	Better signage of facilities, produce Village Map	Signage strategy required for Village Facilities, and sites/buildings of historic importance. Both physical signage and information sharing	WMDC/ CIL	Parish Council
2	Accessibility	Footpath Improvement	Improve footpath north of Walton Community Club Fields	WMDC/CIL	WMDC/Parish Council/ Wakefield Cycle Forum
2	Accessibility	Footpath Improvement	Improve footpath north of Stubbs Wood	WMDC/CIL	WMDC/Parish Council/ Wakefield Cycle Forum

Section 4.0

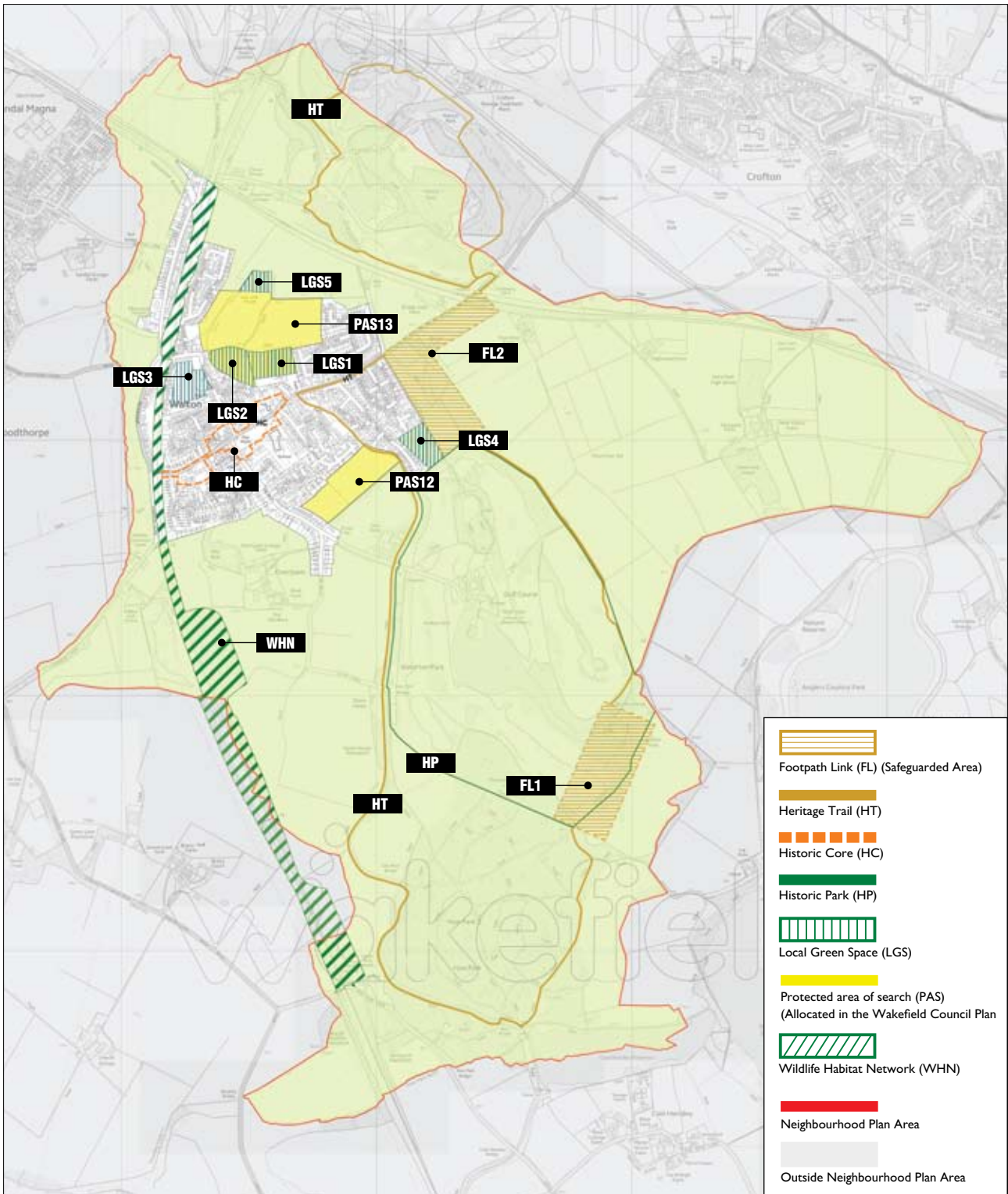
Delivery Plan

Priority	Theme	Title	Description	Potential Funding	Lead Organisation
2	Village services	Create Local Business Forum	Organise opportunity for local businesses to meet and work together	-	Parish Council
2	Village services	New facility for Guides/Brownies	Review opportunity for new facility/dual use of existing facility	WMDC/CIL	Parish Council
2	Heritage	Conservation Area	Liaise with WMDC to assess the potential for designation of Historic Core as a Conservation Area.	WMDC	Parish Council
2	Heritage	Public Access to Historic Buildings and Features	Open up access to features and buildings	-	Parish Council
2	Heritage	Walton Heritage Trail	Evaluate opportunity to extend the Walton Colliery Nature Park Heritage Trail to comprise the Walton Heritage Trail.	WMDC/CIL	Parish Council
2	Housing	Walton Manor Garages	Liaise with Developers	Private Developers	Parish Council



Section 5.0

WNP Policies Map



© Crown copyright and database rights 2014 Ordnance Survey 100019574

Please Note: This map should be read with all other maps that together form the adopted Policies Map of the Site Specific Policies Local Plan adopted 12 September 2012

Data Protection Statement: Walton Parish Council processes personal data under the provisions of the Data Protection Act 1998 in the performance of its legitimate business. Any information held by the Parish Council will be processed in compliance with the principles set out in the Act. The information you supply will be used and retained for the purpose of preparing the Walton Neighbourhood Plan. The information will be saved on the Neighbourhood Plan database and made available to view on the Parish Council's Neighbourhood Planning website.

Copies of the comments will be made available for public inspection and cannot be treated as confidential.





 **WALTON**
NEIGHBOURHOOD PLAN

Gissing House, 9 Wentworth Terrace,
Wakefield, West Yorkshire WF1 3QW.

Telephone: 07970 300068

Email: waltonplan@gmail.com

www.waltonplan.co.uk